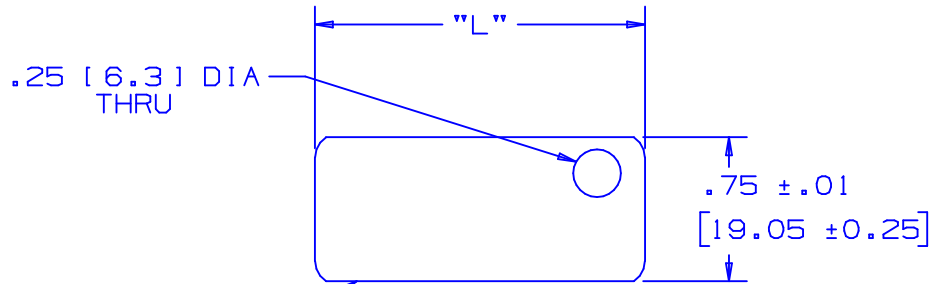


| PANDUIT PART NO. | * MATERIAL | PACKAGE QTY. | LENGTH "L" ±.02 |
|------------------|------------|--------------|-----------------|
| MT172-C | 304 SS. | 100 | 1.72 [43] |
| MT172-C316 | 316 SS. | 100 | 1.72 [43] |
| MT350-C | 304 SS. | 100 | 3.50 [89] |
| MT350-C316 | 316 SS. | 100 | 3.50 [89] |



AISI #5 EDGES ROLLED TO ELIMINATE SHARPNESS

NOTES:

1. DIMENSIONS IN [] ARE mm.
2. CUSTOM PERMANENT MARKING AVAILABLE. CONSULT FACTORY.
3. TOLERANCES:
 .XXX = ±.010 [.25]
 .XX = ±.02 [.5]
 .X = ±.03 [.8]
 ANGLES = ±2°

S41064_02

PANDUIT CORP. TINLEY PARK, ILLINOIS

METAL TAGS - 1 HOLE

UNLESS OTHERWISE SPECIFIED, DIMENSIONAL TOLERANCES ARE:
 (.X) ± --- (.XXX) ± ---
 (.XX) ± --- ANGLES ± ---

UNLESS OTHERWISE SPECIFIED, ALL DIMENSIONS ARE GIVEN IN INCHES, THIRD ANGLE PROJECTION.

| | | | | | | | | | | | | | | | | | |
|-----|-------|------|-----|---|-------|-----|------|----------|----------|-----------------|---|-------------|--------|-----|---|------|--|
| 02 | 5/02 | JAMB | | MAT'L FOR PART NO. MT172-C & MT350-C WAS 302 S.S. | | | | | | | | | | | | | |
| 01 | 1/01 | KMD | JAC | MT172-C316 WAS MT172-316C MT350-C316 WAS MT350-316C FILE SPEC WAS NPC_S41064_00 | 09062 | CCH | JAC | DRAWN BY | SAM | MAT'L: | * | SCALE | FULL | | | | |
| 00 | 11/91 | SM | JAC | RELEASED | 00679 | GJP | LA | DATE | 11/11/91 | * | | DRAWING NO. | S41064 | DWG | A | SIZE | |
| REV | DATE | BY | CHK | DESCRIPTION | ECN # | PM | CUST | CHK'D | JAC | STAINLESS STEEL | | | | | | | |